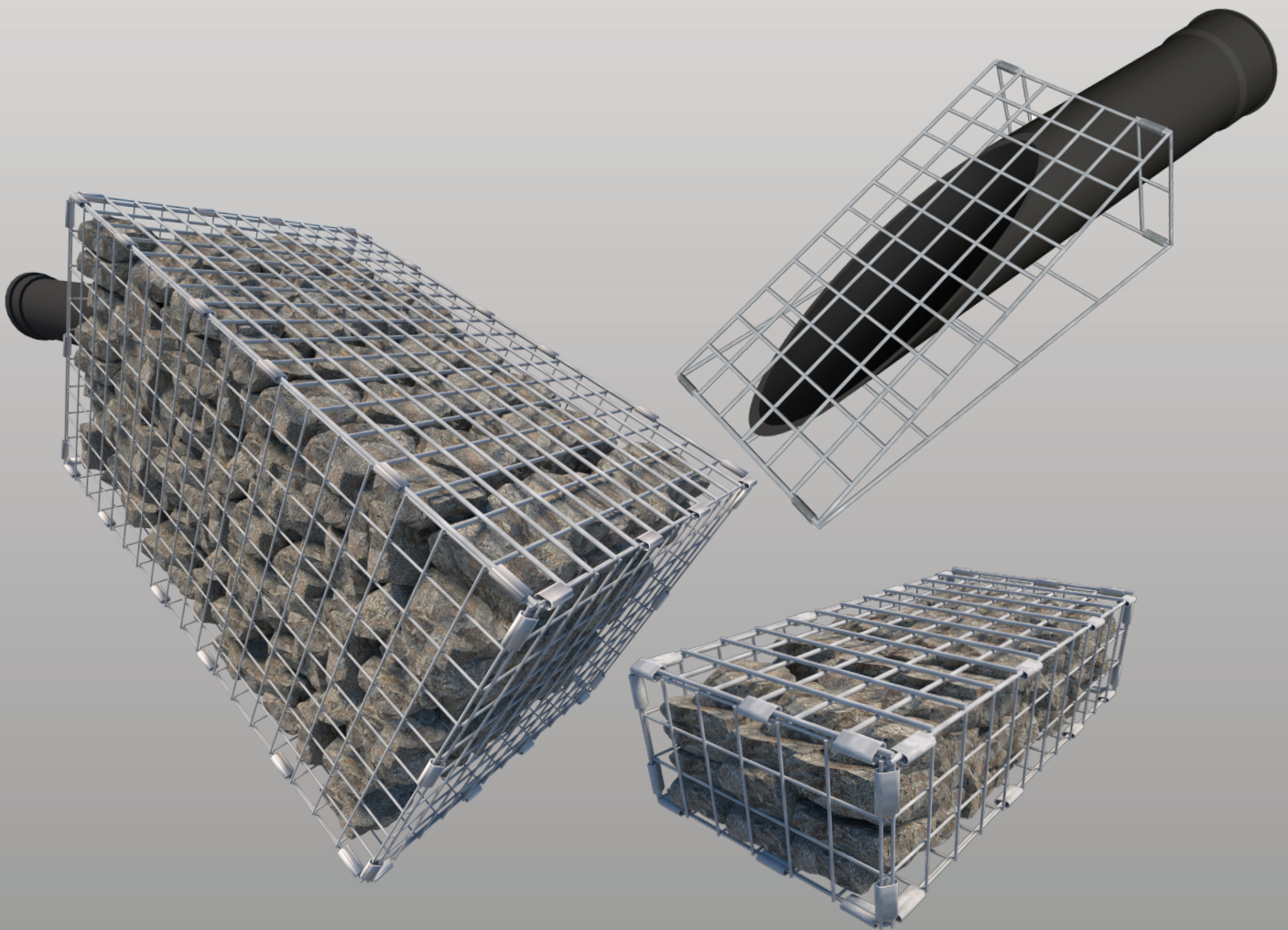


Controflow

SuDS Baskets

Inlet, Outlet and Erosion Control Baskets for Nature Based SuDS
including Swales, Basins, Wetlands and Ponds



Controflow

exclusively from

www.sudsstore.com

**SuDS
store**

Controflow SuDS Baskets

Controflow SuDS Baskets are used in combination to provide attractive, safe and low-maintenance solutions for nature-based SuDS that prevent blockage and minimise erosion. They enable diffuse water flows down gradual (1 in 3 to 1 in 4) safe slopes.

Designed specifically for landscaped SuDS features such as swales, ponds and basins, they offer a nature-based alternative to unsightly and expensive engineered headwalls, aprons and cascades with their resulting fencing and signage.



Low cost and low maintenance

Attractive and discreet

Supplied flat for simple assembly

Durable and long-life

Nature-based and sustainable

Easy to install

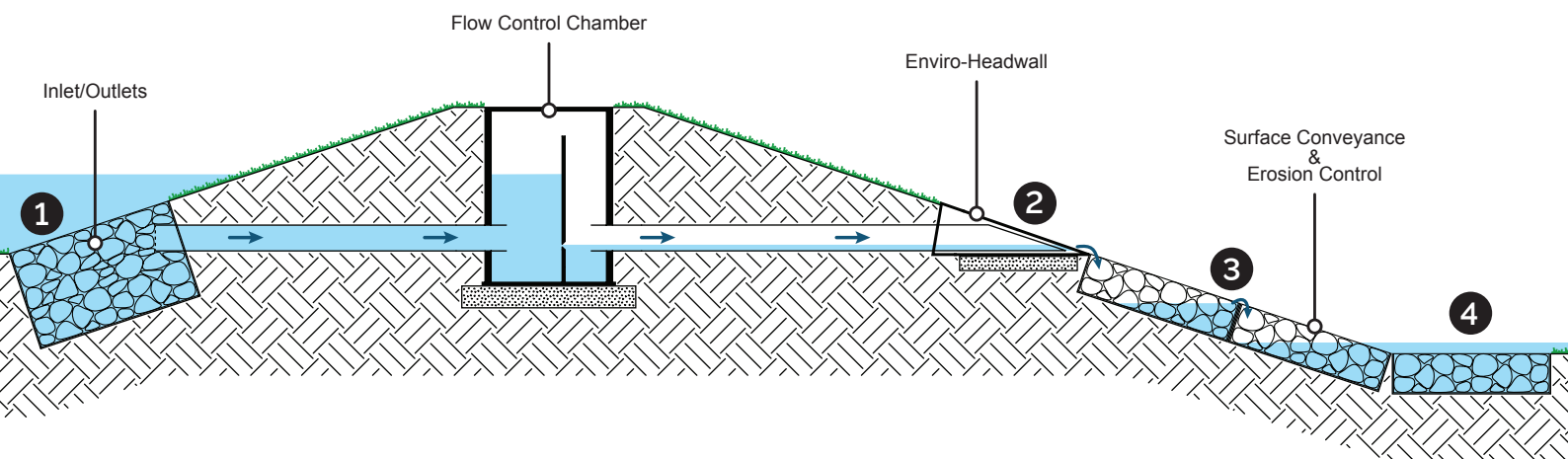


At Hazeley School, Milton Keynes, inlets from the permeable pavement car park deliver a gradual flow of clean water, through Controflow Flow Controls and SuDS Baskets, to a wildlife pond with great crested newts.

Controflow SuDS Baskets

Controflow SuDS Baskets are manufactured from stainless steel mesh (giving extremely long-life with negligible maintenance), for filling with 80mm - 150mm stone (supplied by others) or soil. Each basket is supplied flat with crimp clips (fitted at 200mm centres) and (where appropriate) a geotextile liner for the sides, base and (temporary) lid.

Controflow Inlet Baskets and Enviro-headwalls can be used wherever debris that could block them has been removed 'at source' by, for example, permeable pavement or Controflow Outlet Baskets. Geotextile and pipe guards protect inlets within Inlet Baskets.



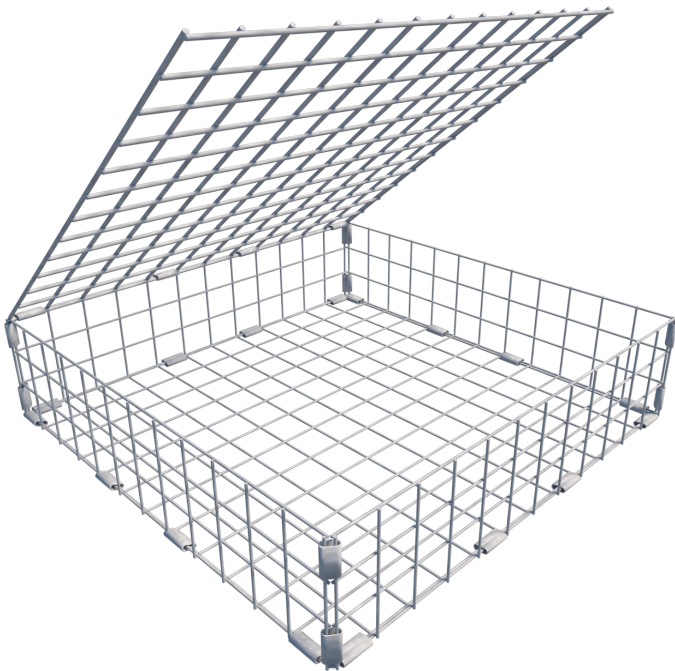
- 1 A Controflow Inlet/Outlet basket prevents floating debris entering the flow control inlet pipe.
- 2 Suitable inlets include Controflow Inlet/Outlet baskets and Enviro-Headwalls, as well as road-inlets or conventional headwalls
- 3 Geotextiles attenuate water within each basket and avoid erosion of gradually sloping safe banks.
- 4 Flow dispersal baskets at the base of slopes prevent scouring.



Controflow Conveyance

As a nature-based alternative to unsightly and expensive engineered aprons and cascades or pipework, Controflow Conveyance baskets enable diffuse water flows down slopes (1 in 3 to 1 in 4) to prevent erosion.

The shallow baskets are wrapped in geotextile (to avoid 'short-circuiting' of flows), then simply laid directly onto subsoil and are designed for filling with 80mm - 150mm stone (supplied by others). A turf surround will protect the slope from erosion during grass establishment.



600x600x150mm SUDS08100



* Stone infill
sold separately

600x300x150mm SUDS08101

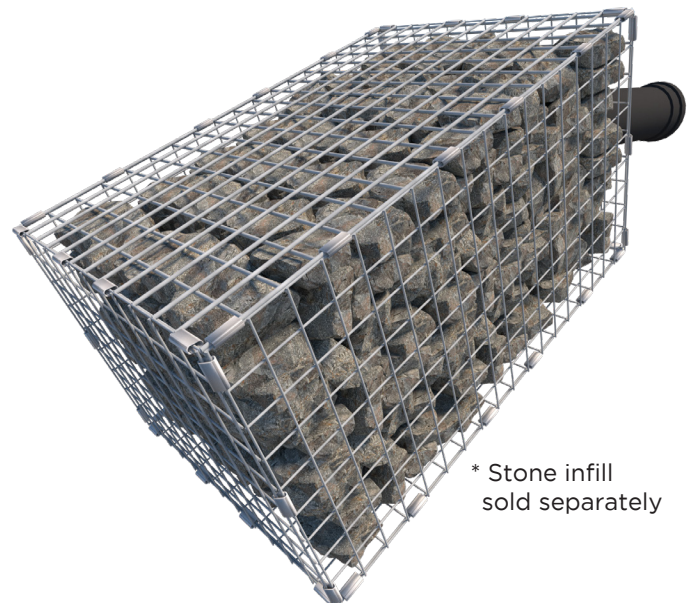
Controflow Inlet/Outlets

Controflow Inlet/Outlet baskets ensure that a free flow of water can leave or enter a SuDS feature without the risk of blockage. They diffuse inbound and outbound flows, concealing and protecting pipes from vandalism. The large surface area, protected by a surrounding geotextile blanket, collects water through a 50mm stainless steel mesh cap (supplied). The stone infill protects the pipe entry from litter, leaf drop, plastic bags, and other floating debris, while fine silt passes directly through the system.

Controflow Inlet/Outlet Baskets are particularly useful to protect the inlet to flow control structures – including those with protected orifices. They have been used in conjunction with Controflow flow control chambers (available via our website), with orifice diameters as small as 20mm, for many years without blockage occurring.



750x600x450mm SUDS08401
ideally suited to 100mm pipe
(please specify pipe size required)



* Stone infill
sold separately

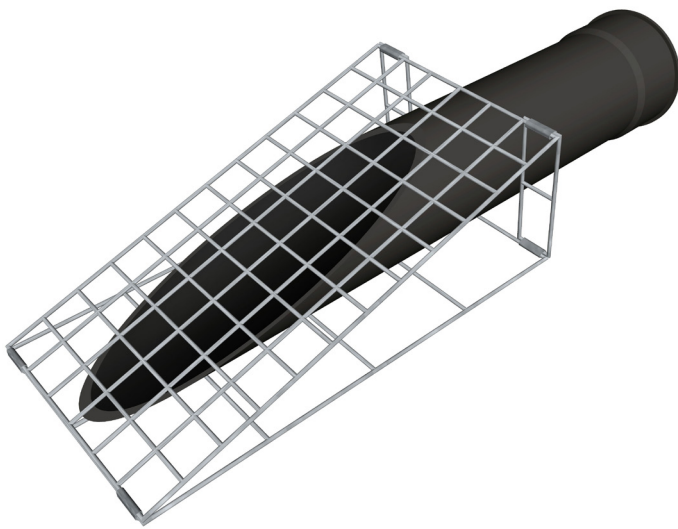
900x600x450mm SUDS08402
ideally suited to 150mm pipe
(please specify pipe size required)

Controflow Enviro-Headwalls

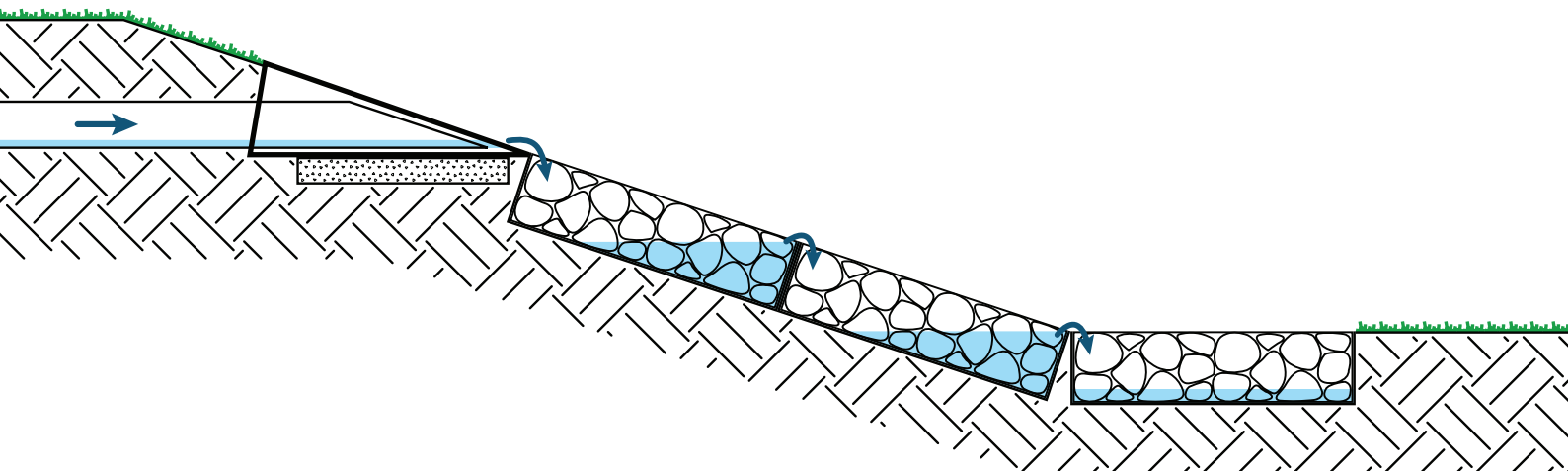
Controflow Enviro-Headwall triangular baskets are a particularly cost-effective way to discharge clean water into a SuDS feature via Controflow Conveyance baskets.

They are a significant improvement over traditional headwalls, blending unobtrusively into their surroundings, and most importantly not needing unsightly fencing to protect from fall hazards.

Installation is quick and easy. They are simply placed on a locating/levelling slab and folded over to protect the cut inlet pipe, then filled around the pipe with soil.



600x300x200mm SUDS08201



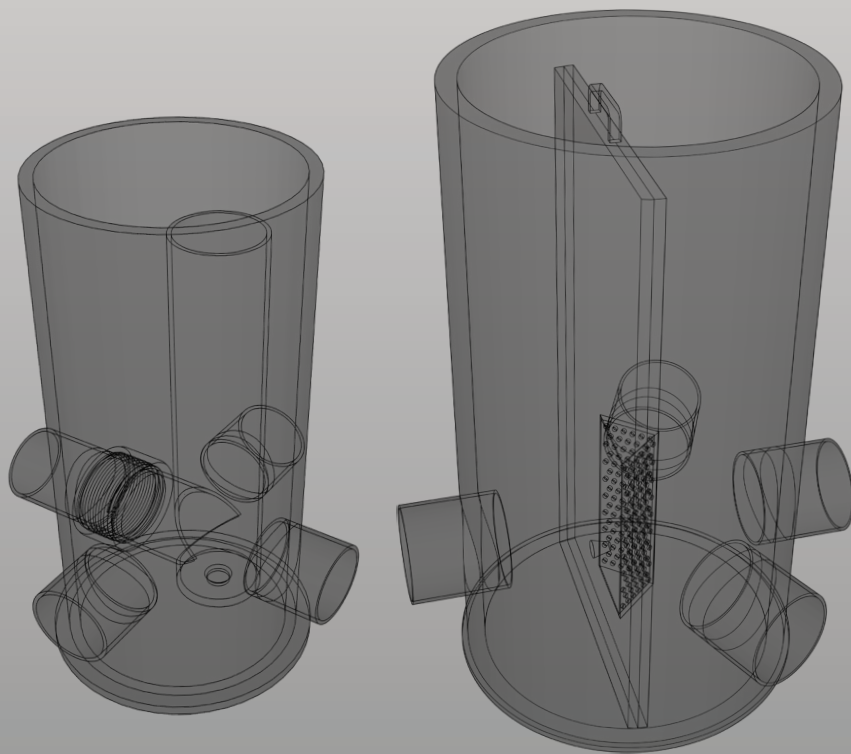
Installing Controflow Inlet/Outlets Baskets

- 1 Check the basket: including clips at approx 200mm centres including at ends of mesh panels with 5mm gauge mesh face to the top and sides.
- 2 Excavate a hole round the inlet/outlet pipe approx 100mm greater than the basket dimensions.
- 3 Confirm location of pipe entry to basket and cut the mesh to form a hole to receive the pipe end.
- 4 Sand or MOT type 1 blind the base of the excavation to provide a firm base for the basket.
- 5 Confirm that the basket edges will be flush with the proposed finished levels of the bank.
- 6 Place the geotextile liner in the excavation, cutting a cross opening to receive the pipe.
- 7 All geotextile cut edges should overlap by at least 150mm with the top fully lapped to prevent contamination of the basket by soil during construction.
- 8 Place the basket into the excavation and over the pipe end. There should be a minimum 100mm pipe within the basket to receive the stainless steel protective guard. There should be a minimum 100mm cover from the top of the basket to the top of the guard.
- 9 Fix the protective guard by push-fitting onto the tac welded flanges.
- 10 Carefully back fill around geotextile to the basket to support the sides of the basket. Fill the basket with selected 80-150mm stone with the final layer of stone placed by hand flush with the basket lid to support it.
- 11 A single layer of 200x100x100mm or 100xx100x100mm granite setts, laid loose with 10mm joints, can be placed as a finishing layer to support the stainless steel lid and to provide an attractive finished appearance.
- 12 Close the basket lid ensuring all points are supported by stone.
- 13 Fix the stainless steel clips with the closed opening facing inwards into the basket, using a monkey wrench or adjustable spanner to close the clips around the two rods. The clip should be fully closed to reduce the possibility of unauthorised opening.
- 14 Lap geotextile over the lid covering the lid completely to prevent soil ingress.
- 15 Cultivate a minimum of 100mm topsoil and tread to firm around the basket. Seed or turf with finished levels flush with the basket lid.
- 16 Cut geotextile to leave 50mm upstand around the basket once the SuDS becomes operational.
- 17 Cut the geotextile flush with the basket once the grass is fully established or at final completion of the project.



In addition to Controflow SuDS Baskets, SuDSstore offers a comprehensive range of orifice flow control chambers specifically designed for all types of shallow SuDS elements with low flow rates – whether new-build or retrofit.

For more information visit www.sudsstore.com



Call:
01254 694 071

Email:
info@sudsstore.com

Visit:
sudsstore.com